
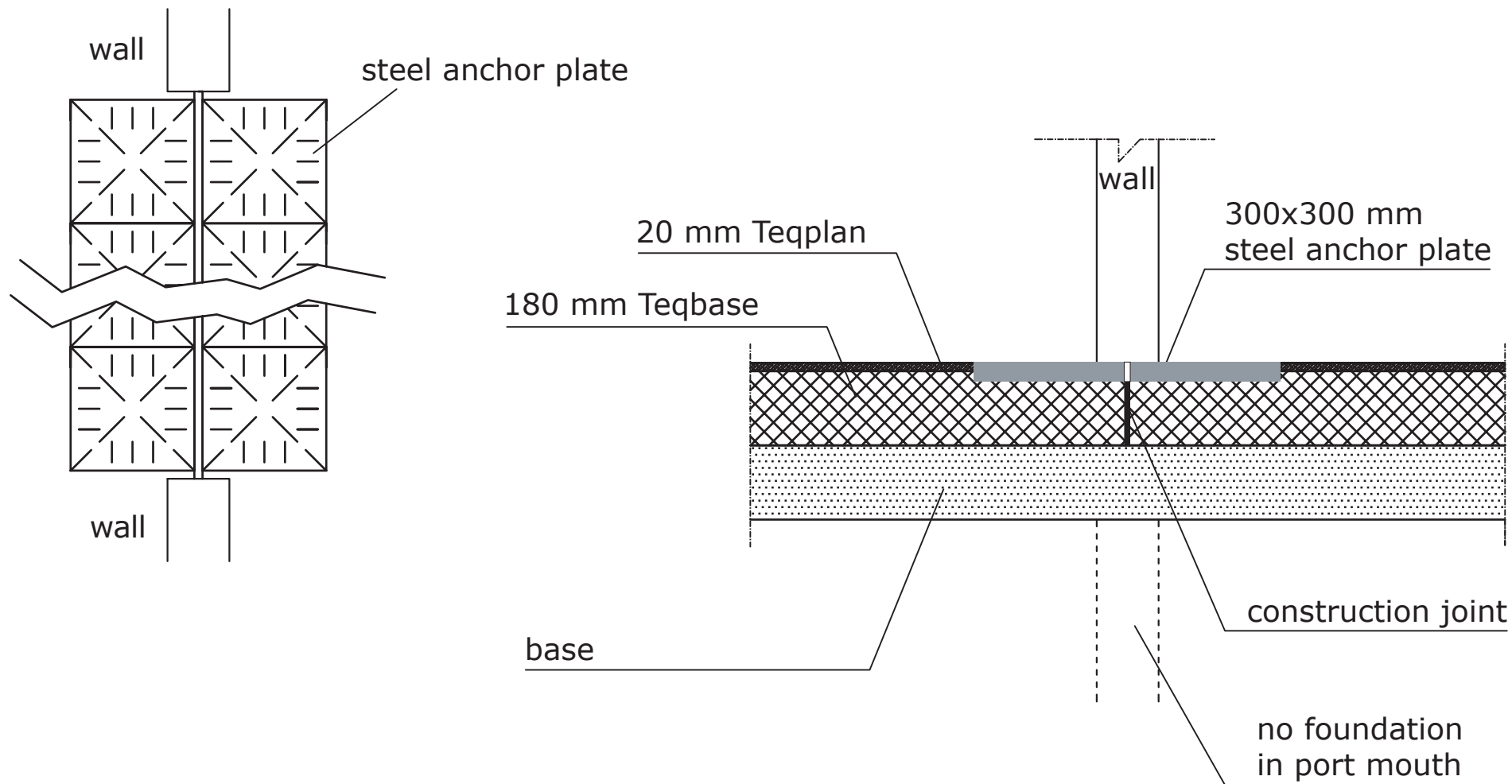

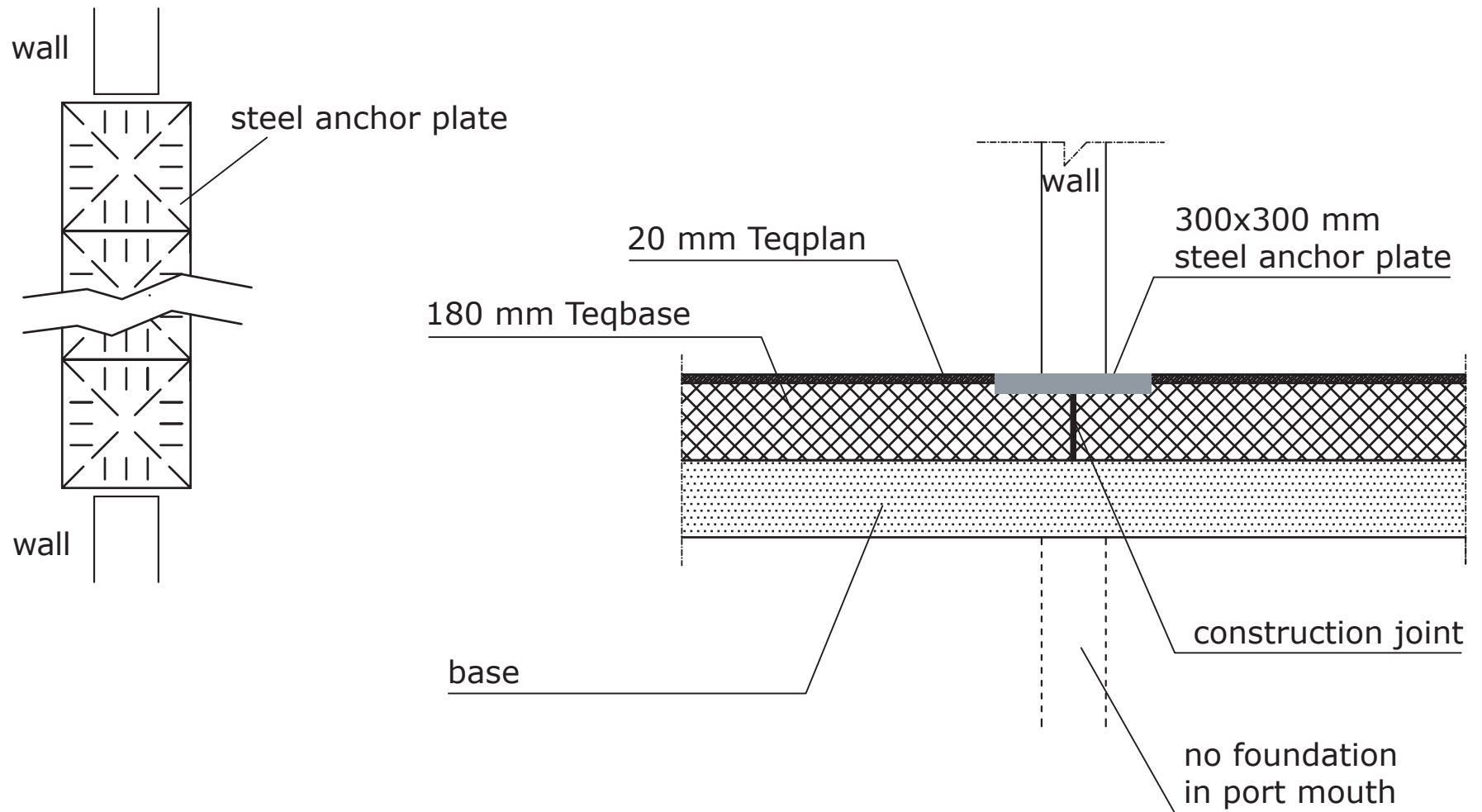


title Detail solution internal gates. To be used in heated industrial buildings with insulation.		
	measurement not dimensionally stable	date 01.07.08
	name DA	drawing no. 01 A



title Detail solution internal gates. To be used in unheated industrial buildings without insulation.		
	measurement not dimensionally stable	date 01.07.08
	name DA	drawing no. 02 B



title Detail solution internal gates. To be used in heated industrial buildings without insulation.

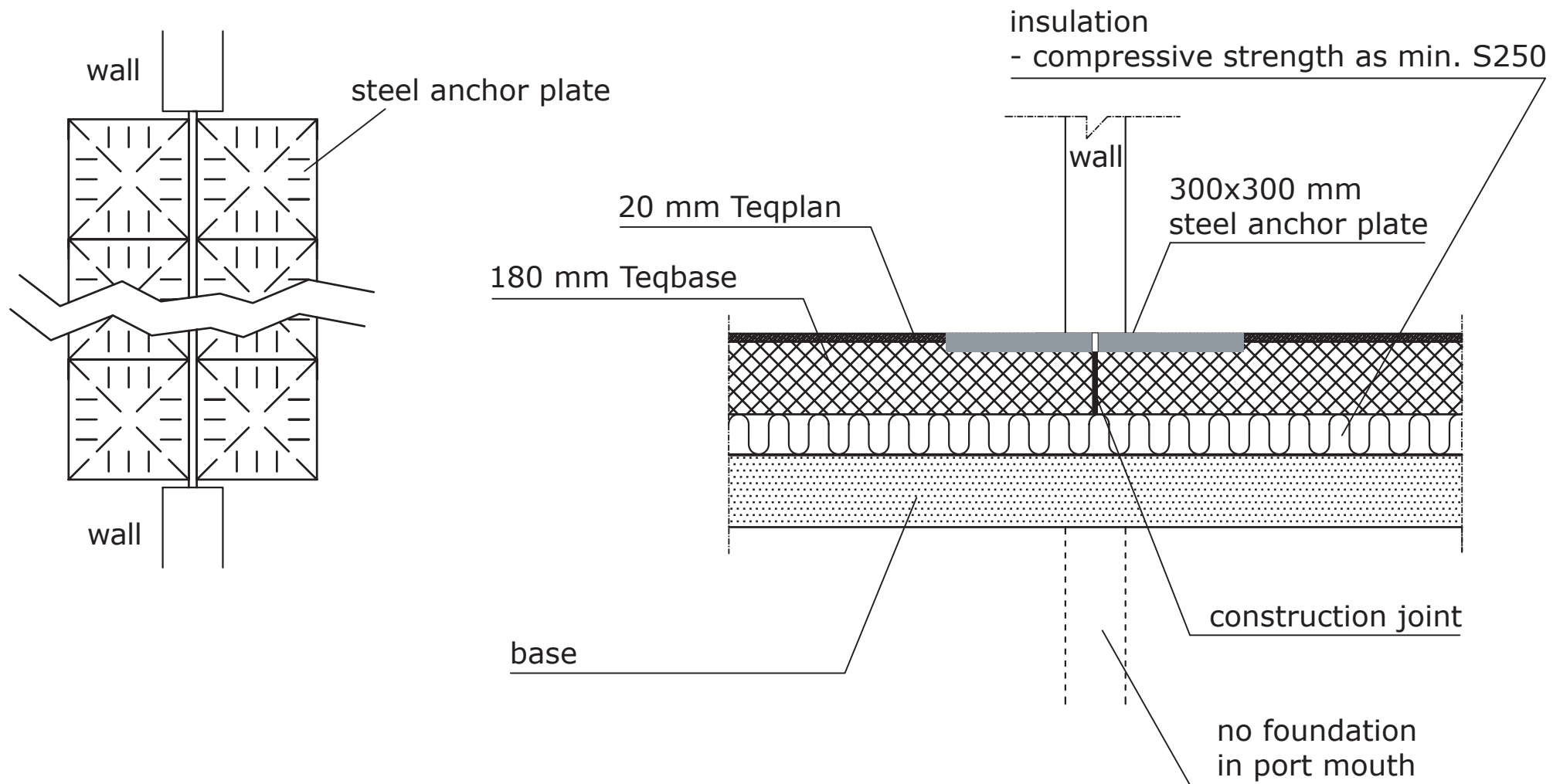
teqton


measurement
not dimensionally stable

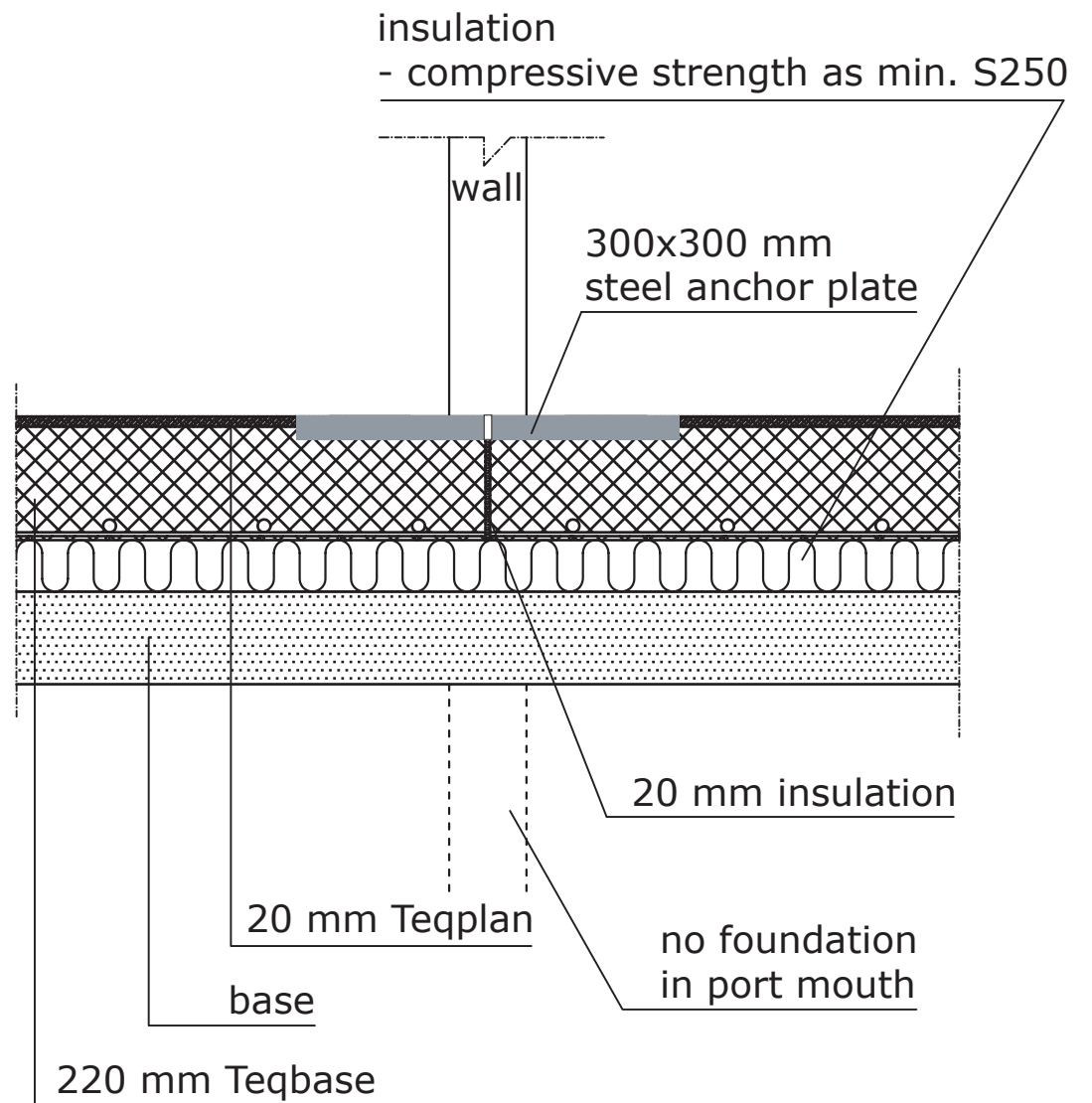
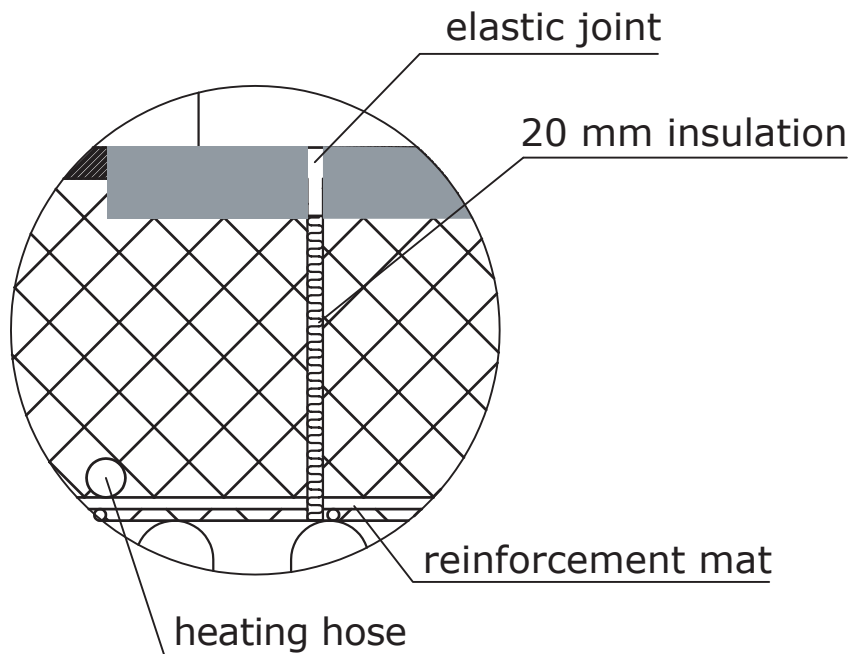
date
01.07.08

name
DA

drawing no.
01 B



title Detail solution internal gates. To be used in unheated industrial buildings with insulation.		
	measurement not dimensionally stable	date 01.07.08
	name DA	drawing no. 02 A



title Detail solution internal gates. To be used in industrial buildings with floor heating with insulation.

teqton

measurement
not dimensionally stable

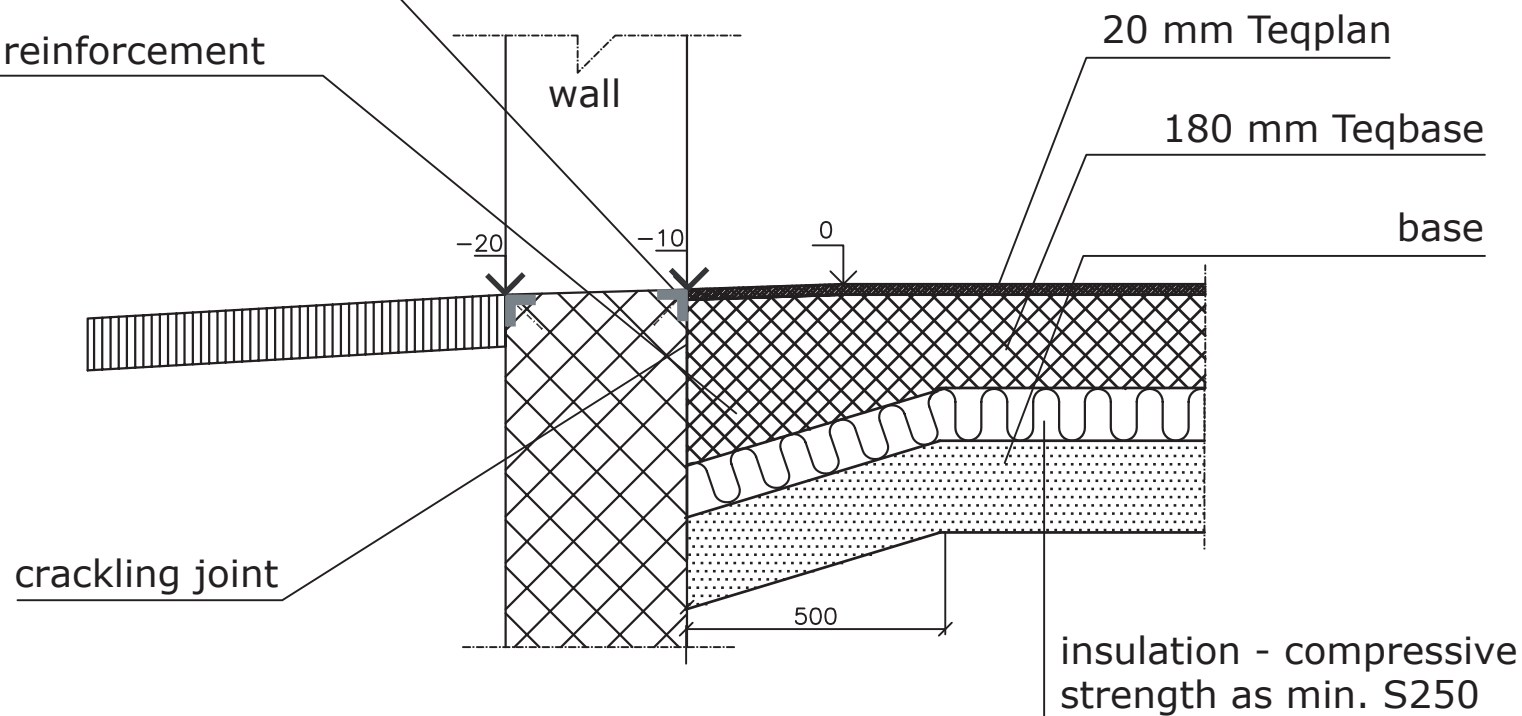
date
01.07.08

name
DA

drawing no.
03 A

angle bar embedded in foundation

150 mm Teqbase reinforcement



title Detail solution - gates in exterior walls with insulation.

teqton

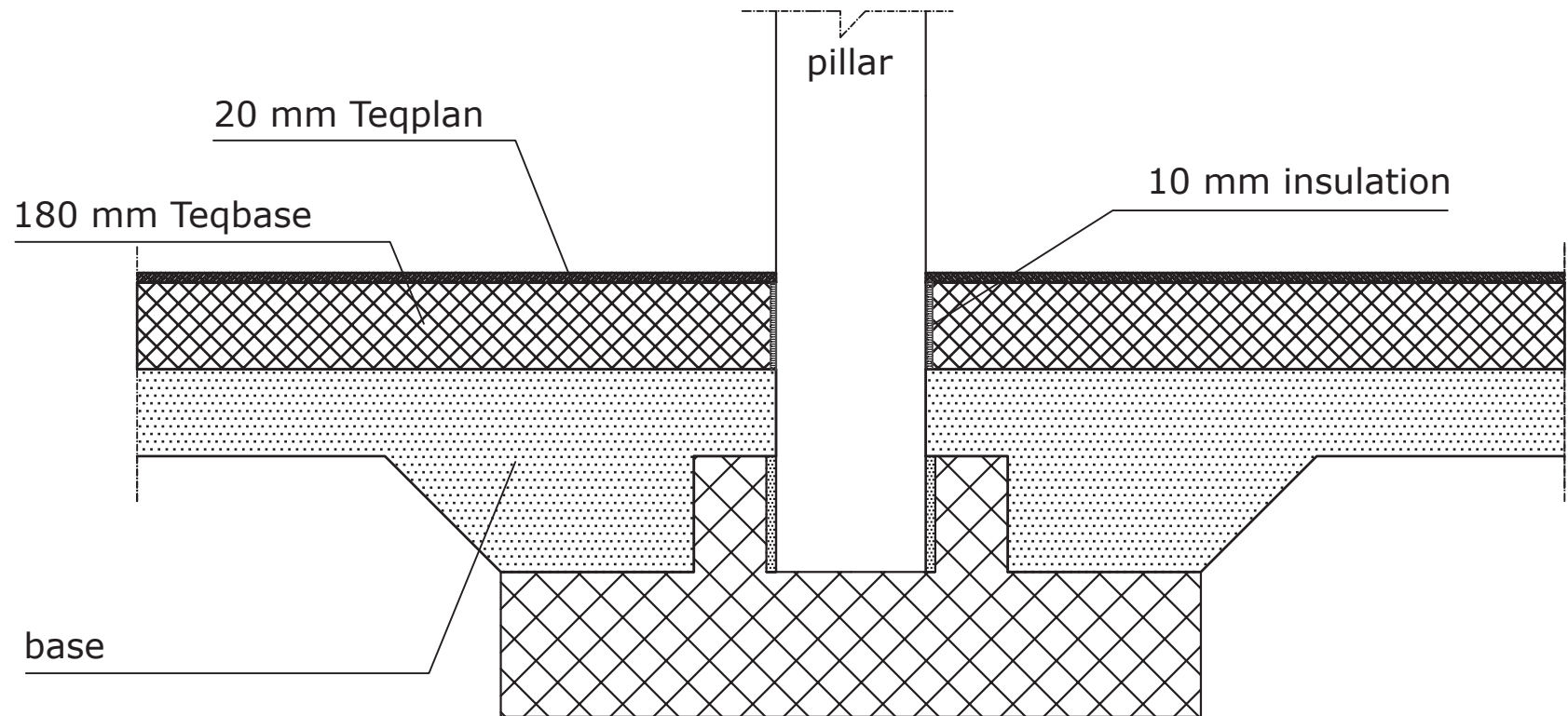
measurement
not dimensionally stable


date
01.07.08

name
DA

drawing no.
04 A

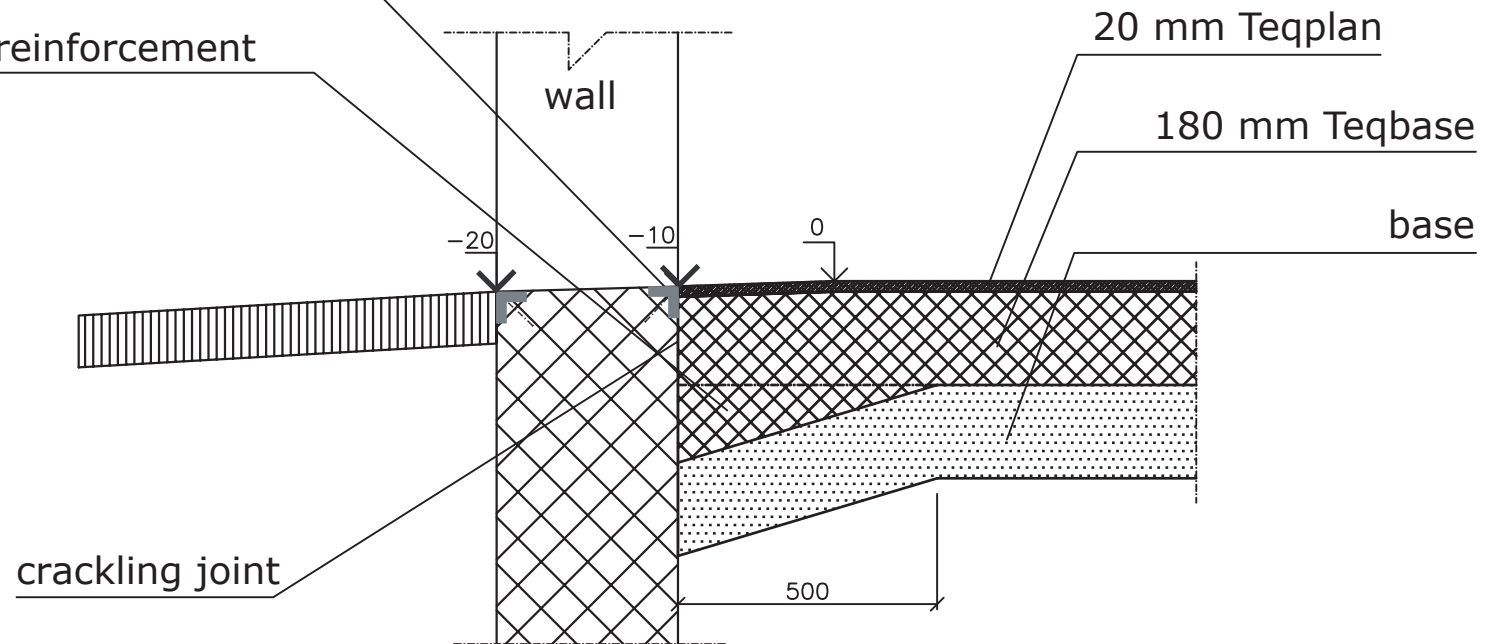
all undefined measurements are in mm.



title	Detail solution point foundation II without insulation.	
	measurement not dimensionally stable	date 01.07.08
	name DA	drawing no. 07 B

angle bar embedded in foundation

150 mm Teqbase reinforcement



title Detail solution - gates in exterior walls without insulation.

teqton

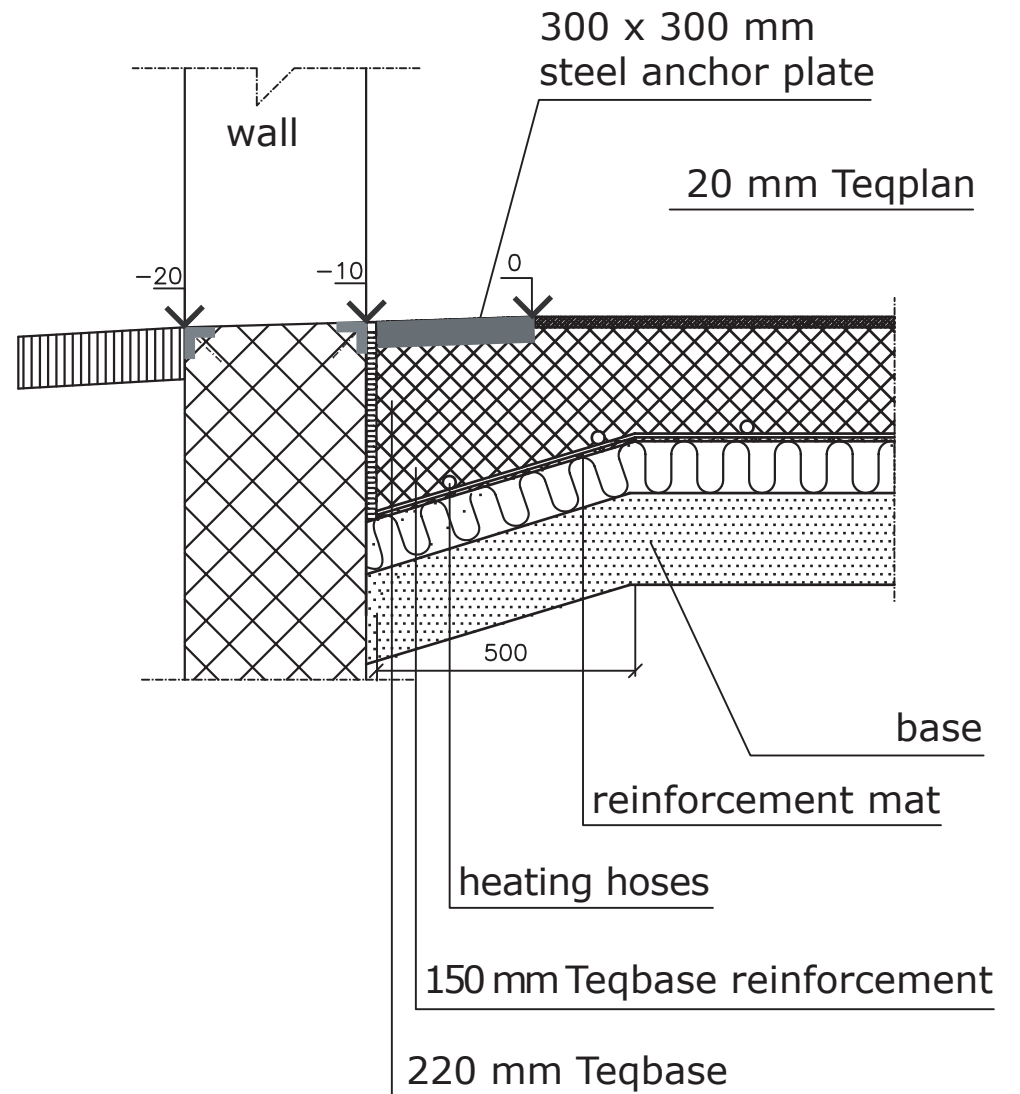
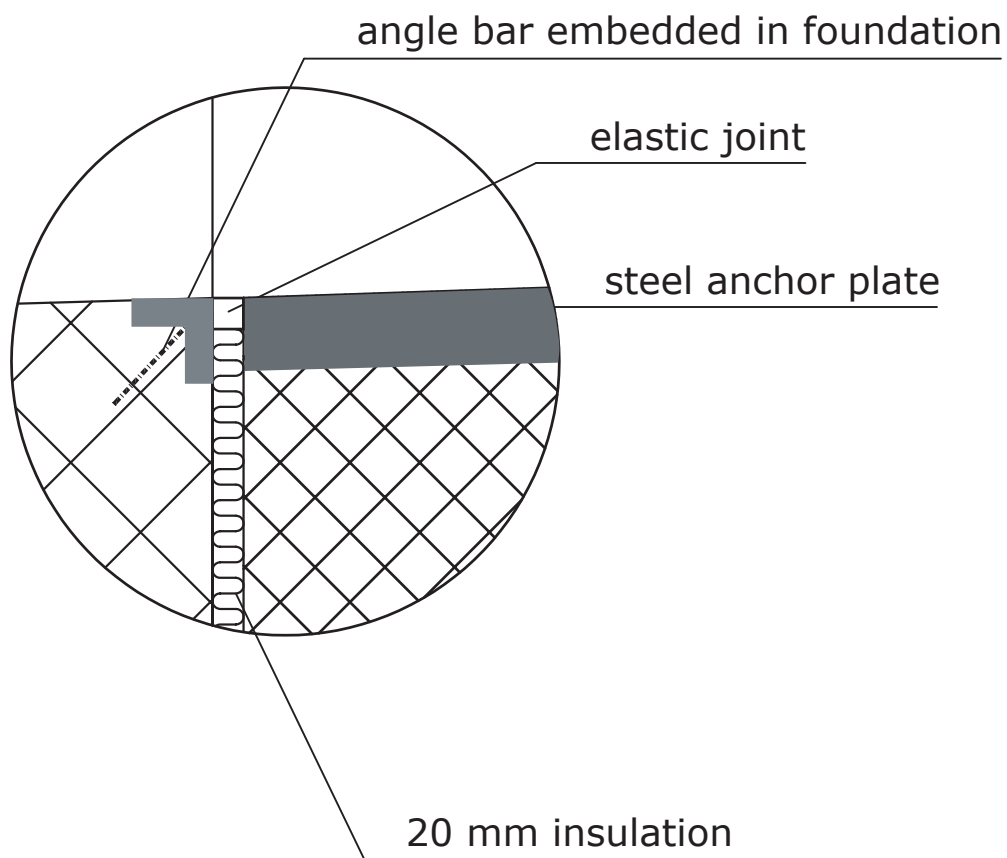
measurement
not dimensionally stable

date
01.07.08


name
DA

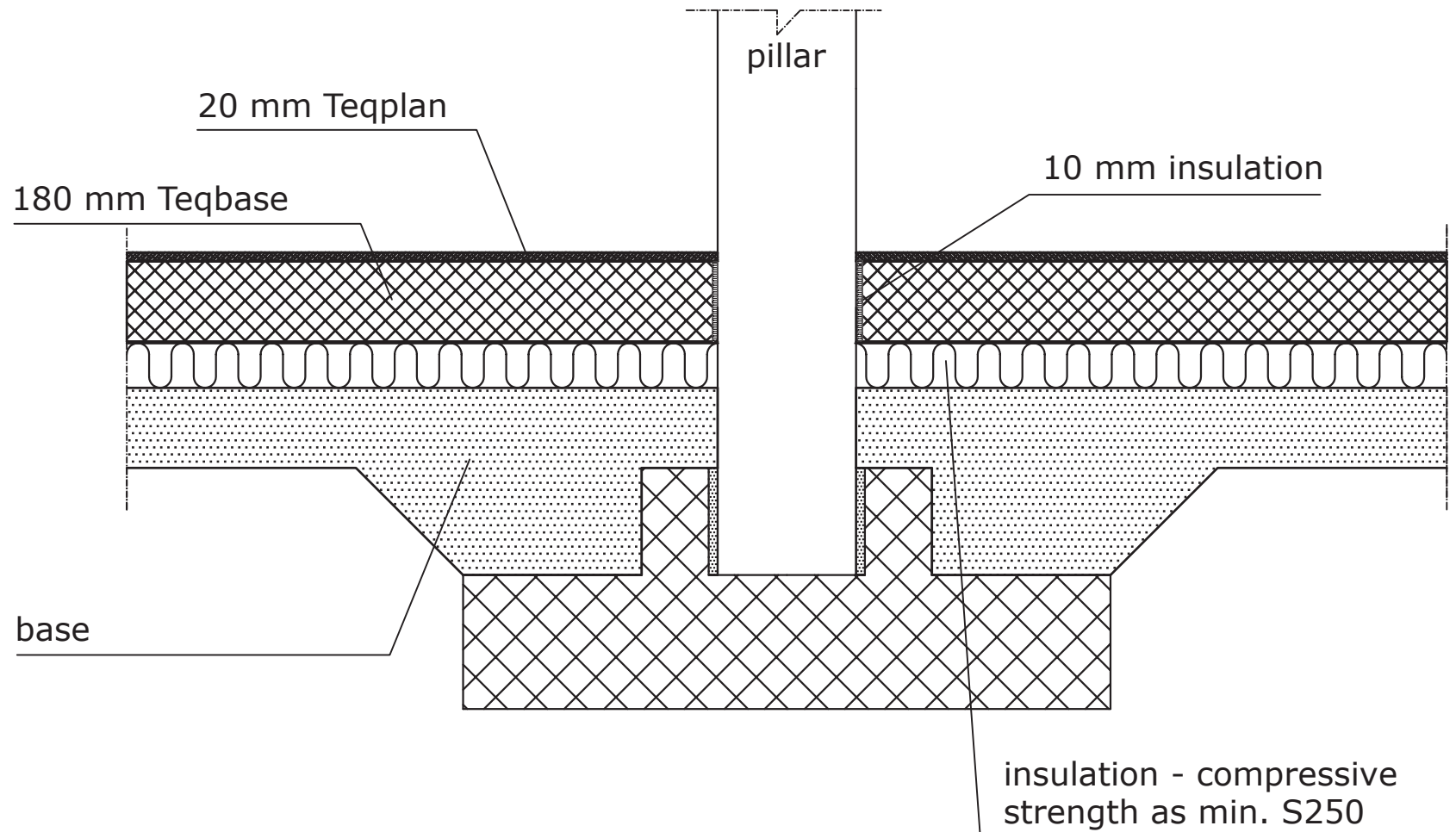
drawing no.
04 B


all undefined measurements are in mm.

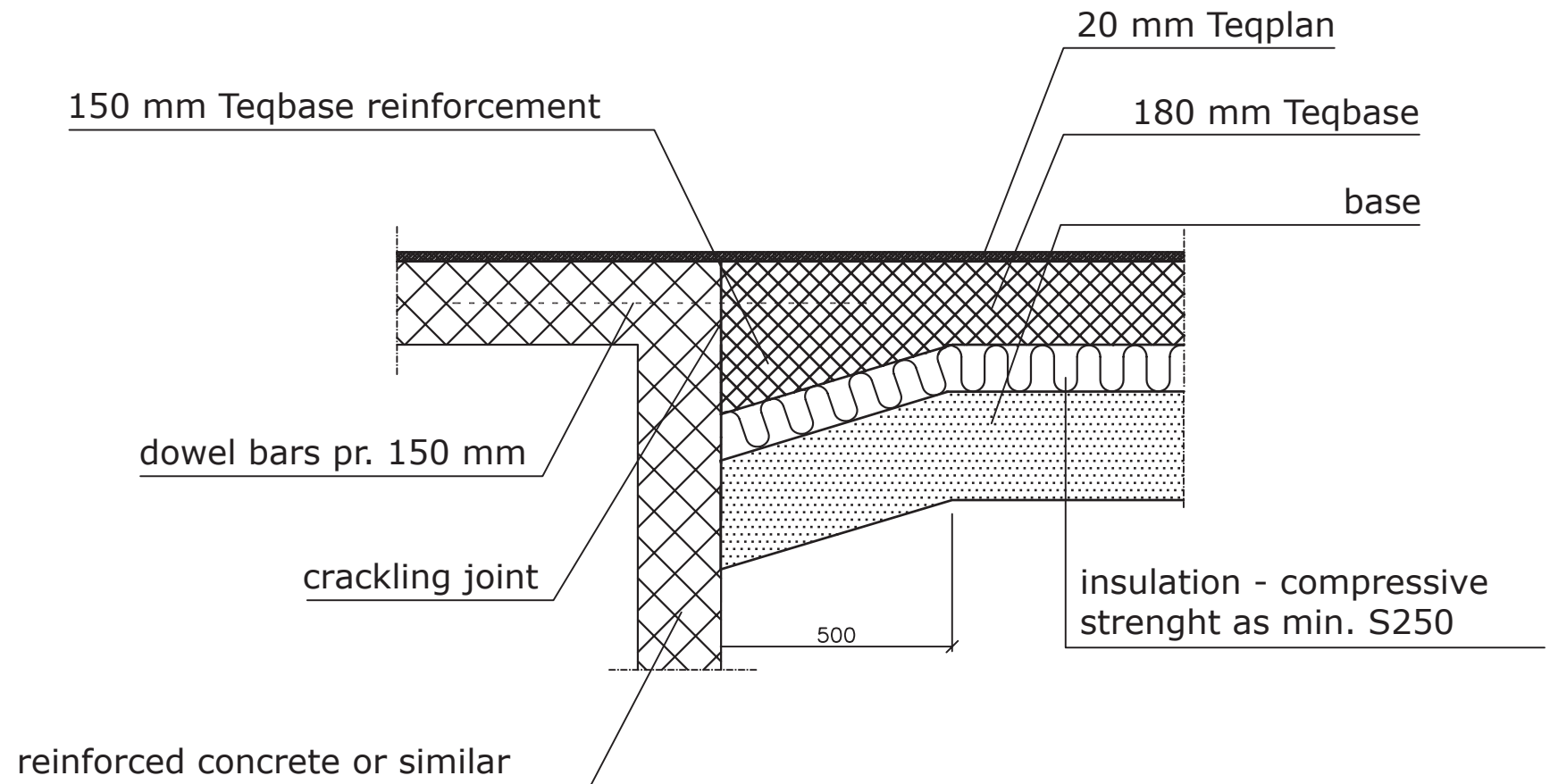



all undefined measurements are in mm.

title Detail solution gates in exterior walls. To be used in industrial buildings w. floor heating w. insulation.		
	measurement not dimensionally stable	date 01.07.08
	name DA	drawing no. 05 A

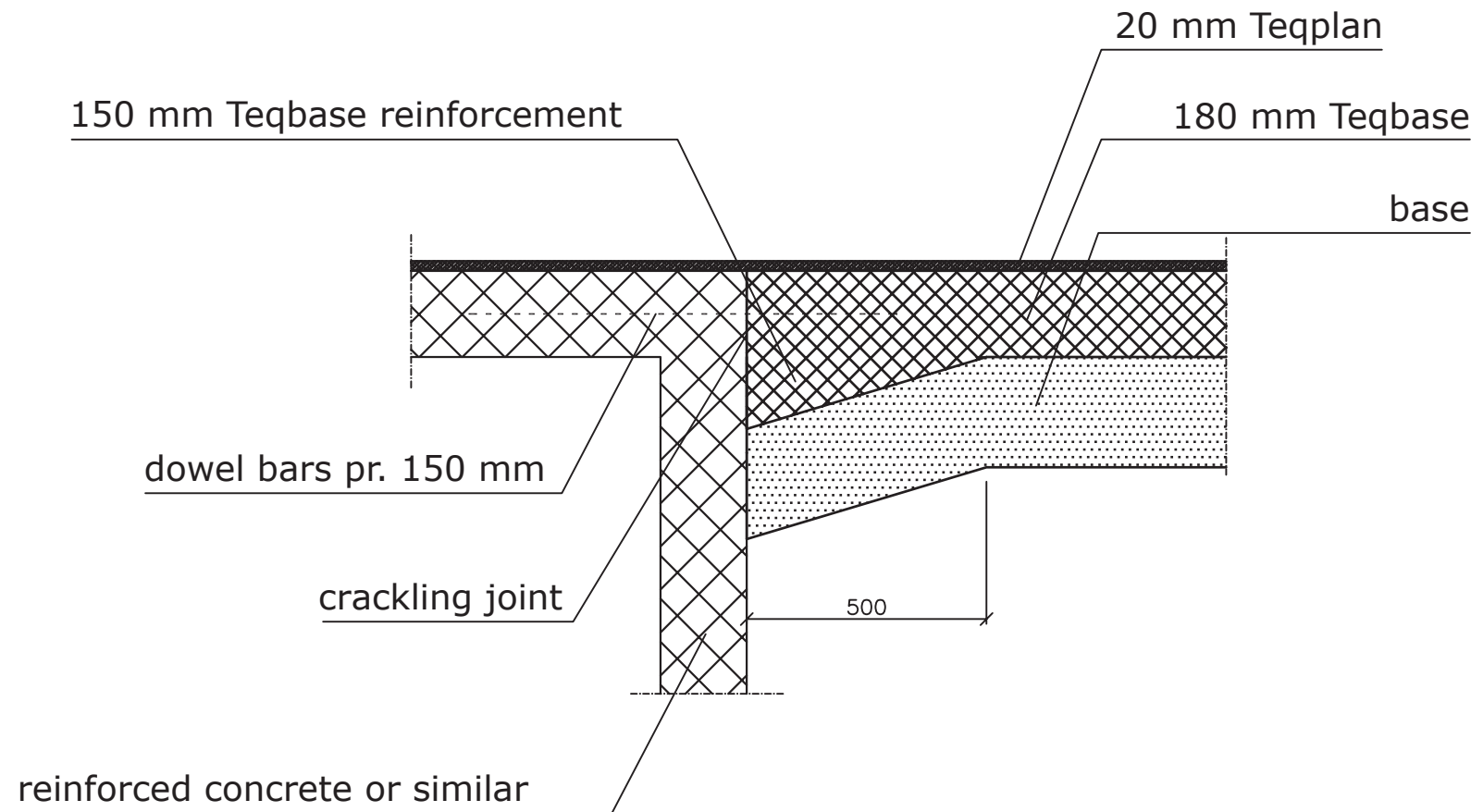



title Detail solution point foundation II with insulation.		
	measurement not dimensionally stable	date 01.07.08
	name DA	drawing no. 07 A



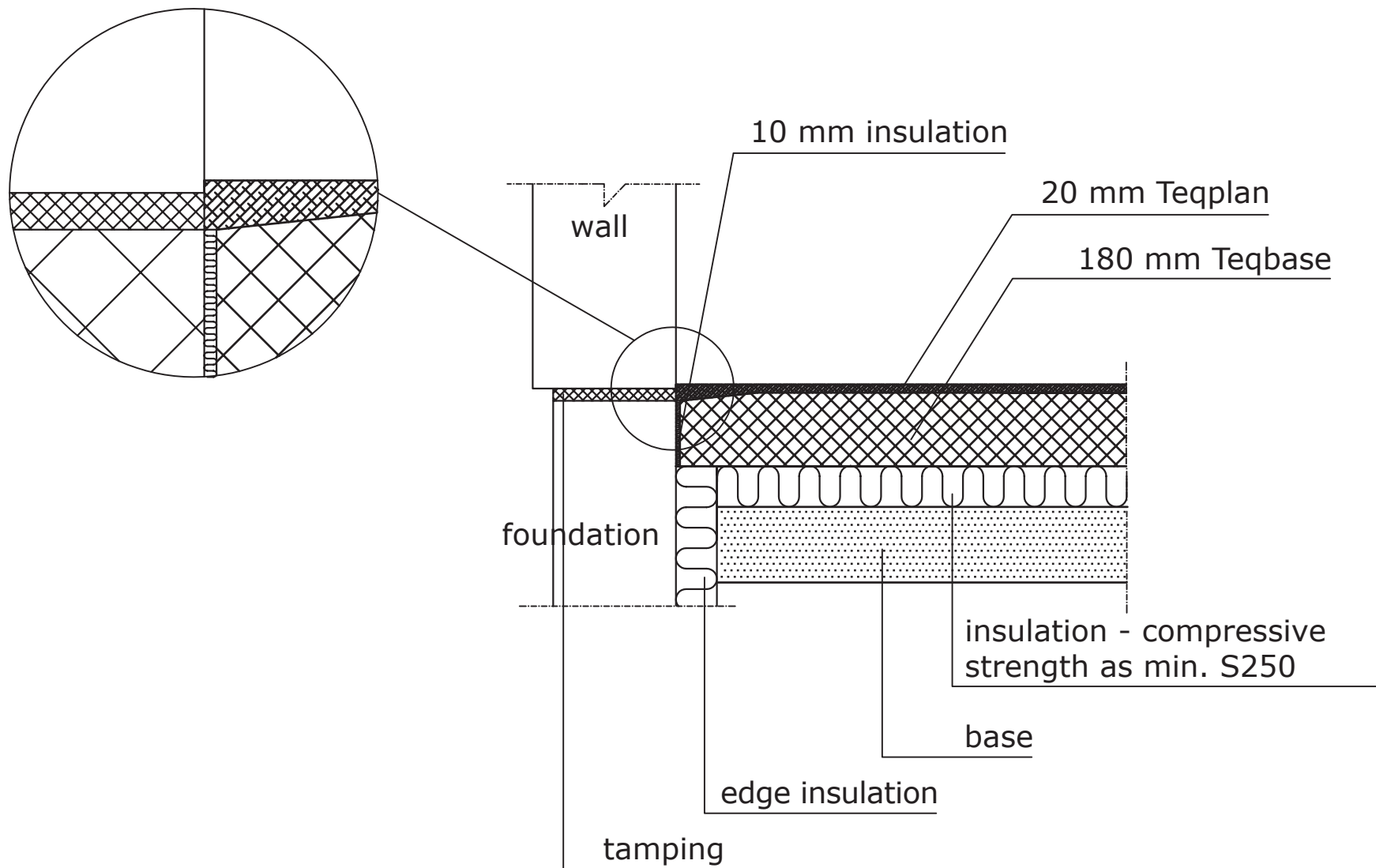
title Detail solution - junction cellar etc. with insulation.		
	measurement not dimensionally stable	date 01.07.08
	name DA	drawing no. 08 A


all undefined measurements are in mm.

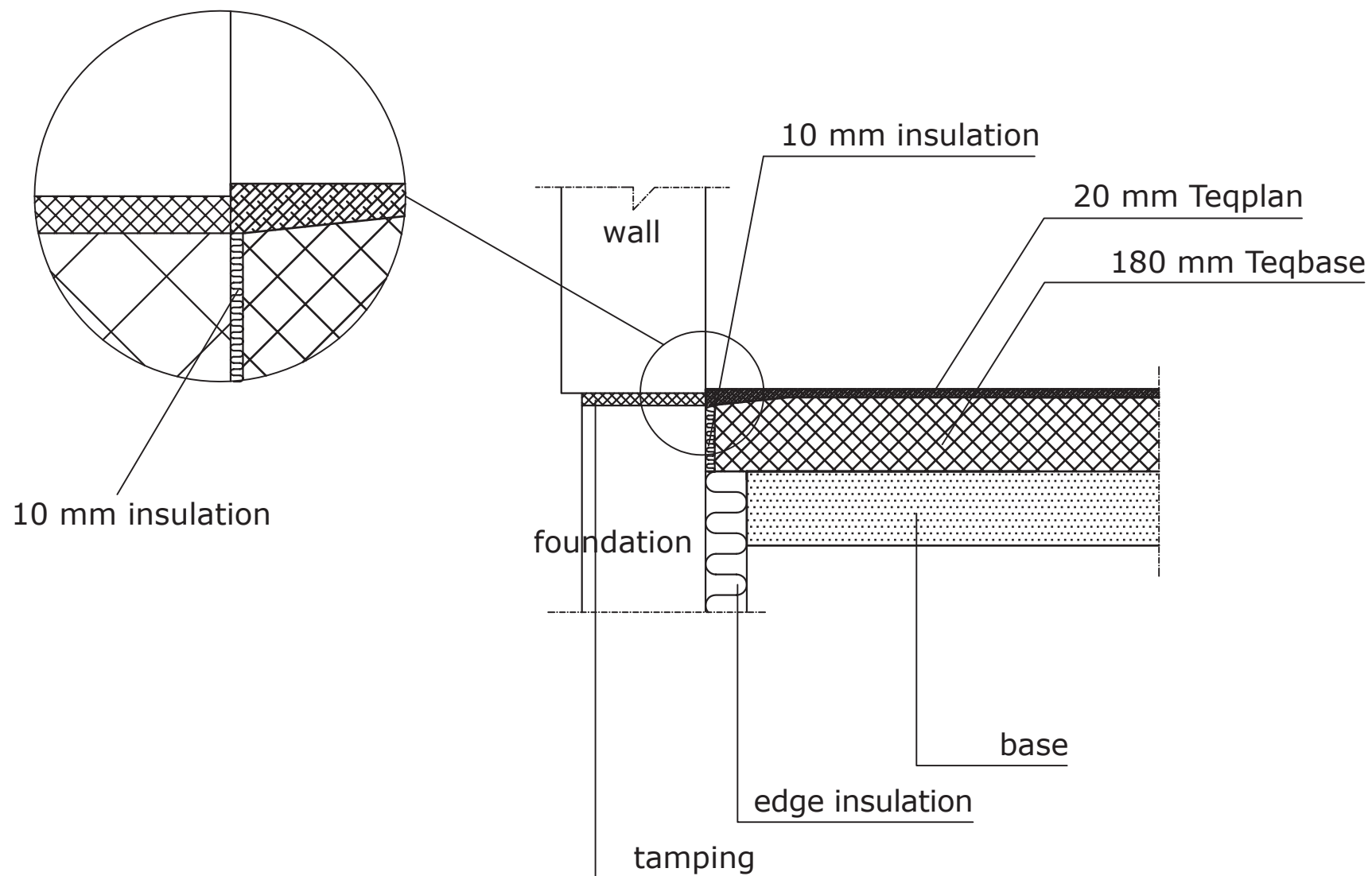



title Detail solution - junction cellar etc. without insulation.		
	measurement not dimensionally stable	date 01.07.08
	name DA	drawing no. 08 B

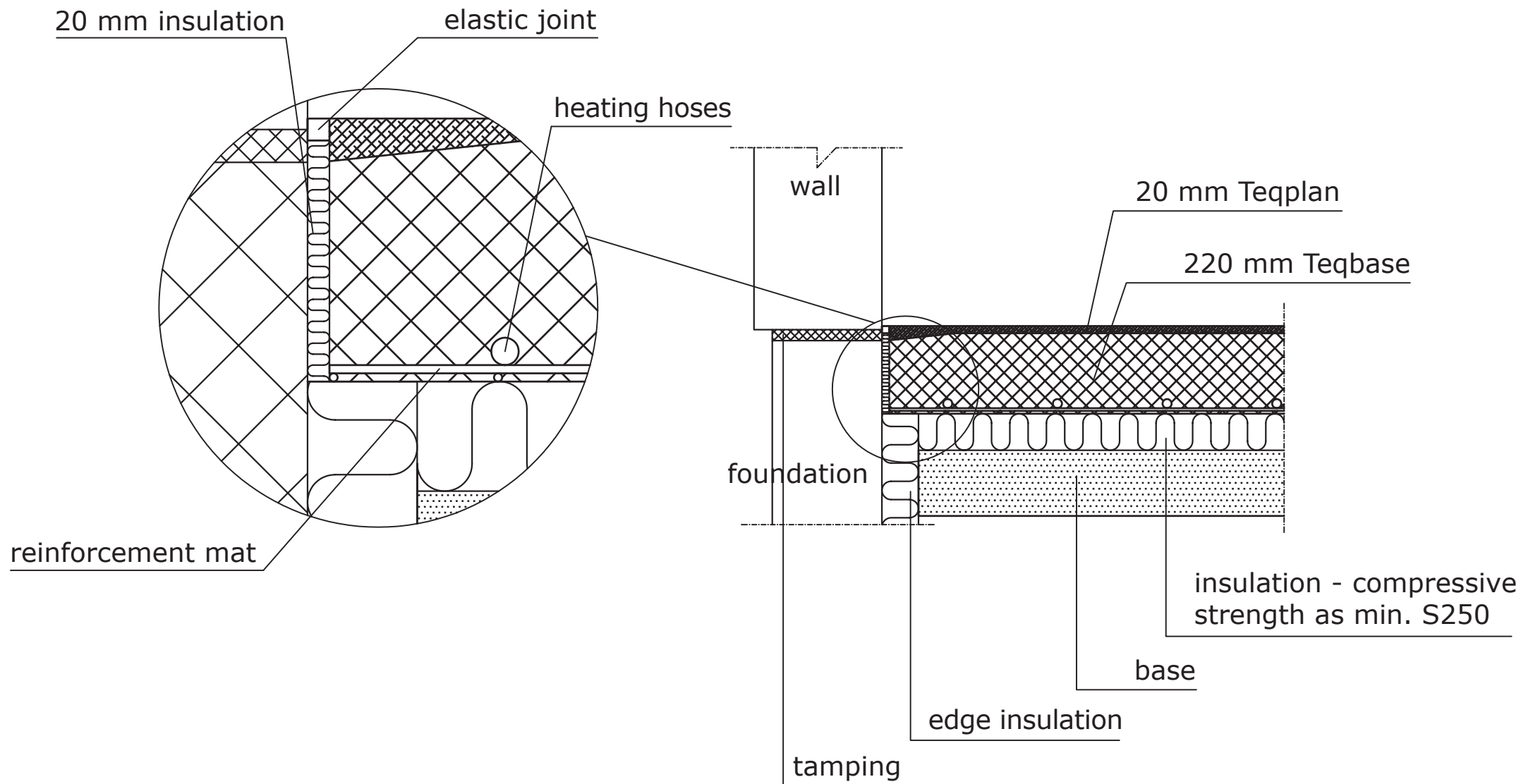
all undefined measurements are in mm.




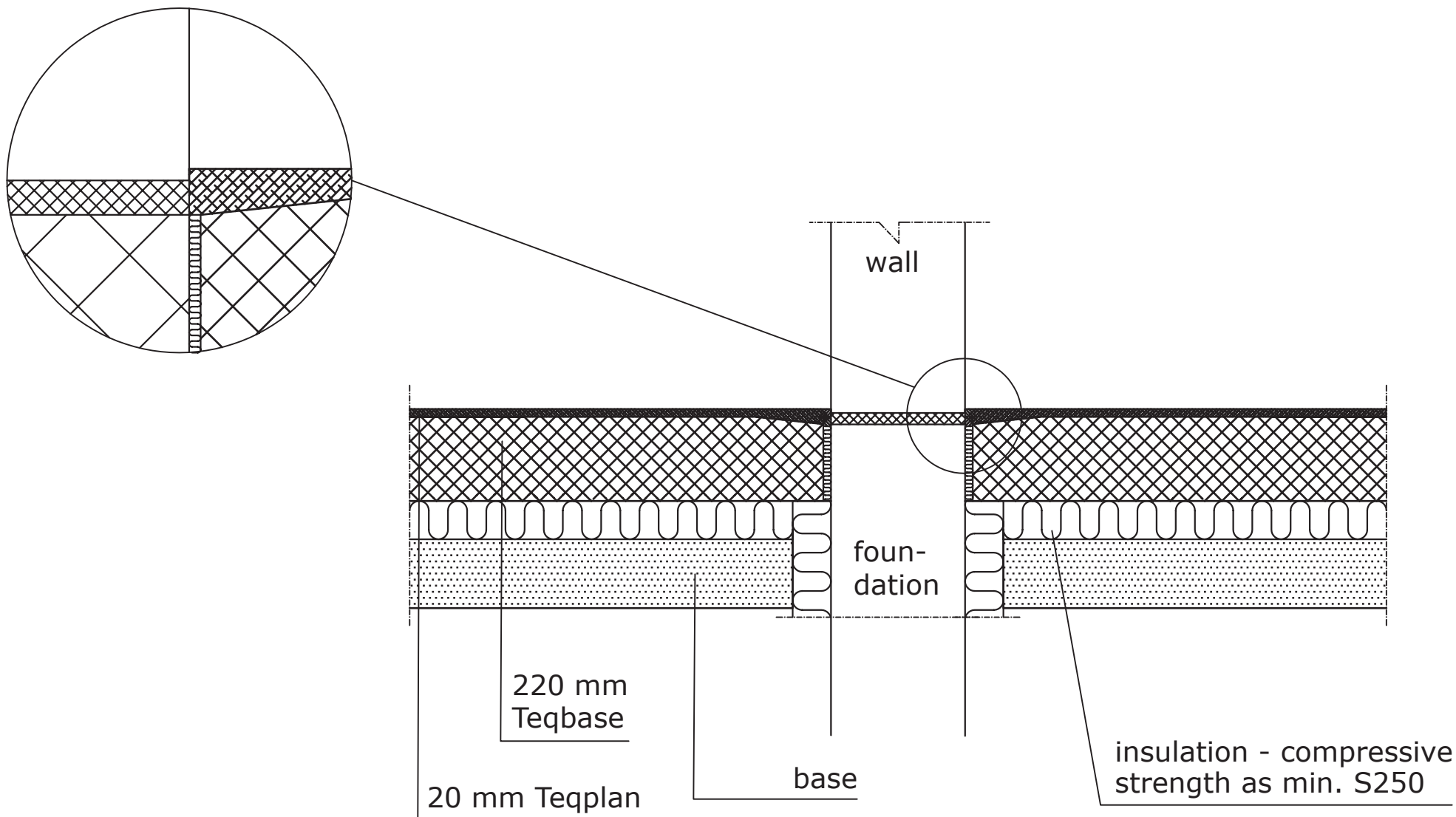
title	Detail solution external walls with insulation.	
	measurement not dimensionally stable	date 01.07.08
	name DA	drawing no. 09 A




title Detail solution external walls without insulation.		
	measurement not dimensionally stable	date 01.07.08
	name DA	drawing no. 09 B

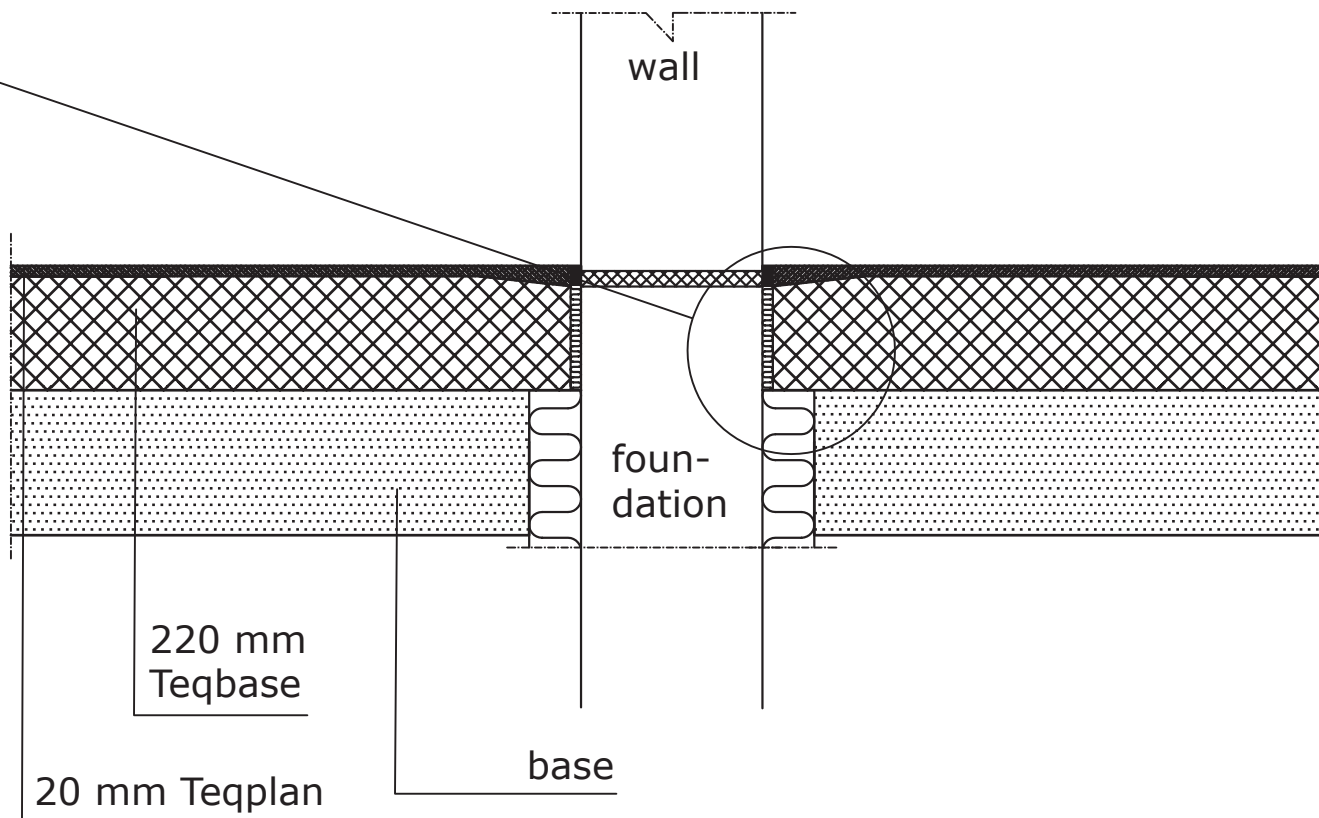
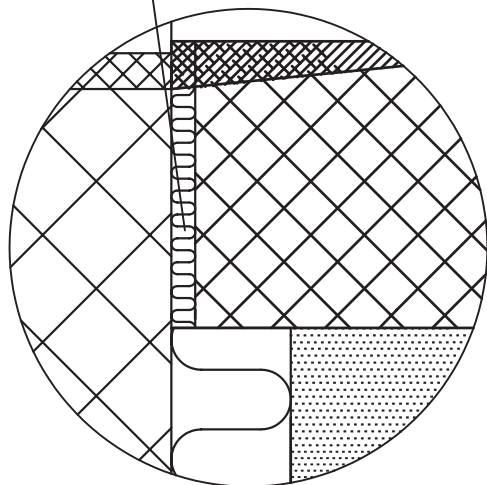



title Detail solution external walls. To be used in industrial buildings with floor heating with insulation.		
	measurement not dimensionally stable	date 01.07.08
	name DA	drawing no. 10 A

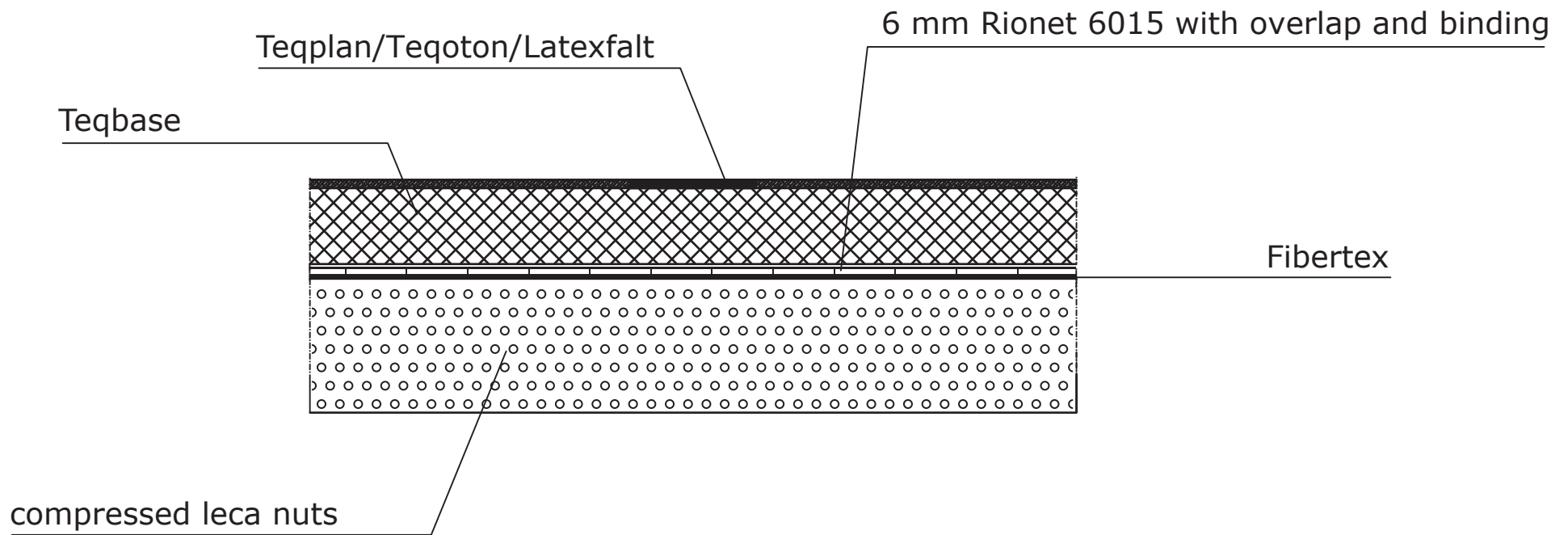



title Detail solution internal walls with insulation.		
	measurement not dimensionally stable	date 01.07.08
	name DA	drawing no. 11 A (1)

10 mm insulation



title Detail solution internal walls without insulation.		
	measurement not dimensionally stable	date 01.07.08
	name DA	drawing no. 11 A (2)



title Detail solution by insulation of loose leca.		
	measurement not dimensionally stable	date 15.05.09
	name DA	drawing no. 12 A